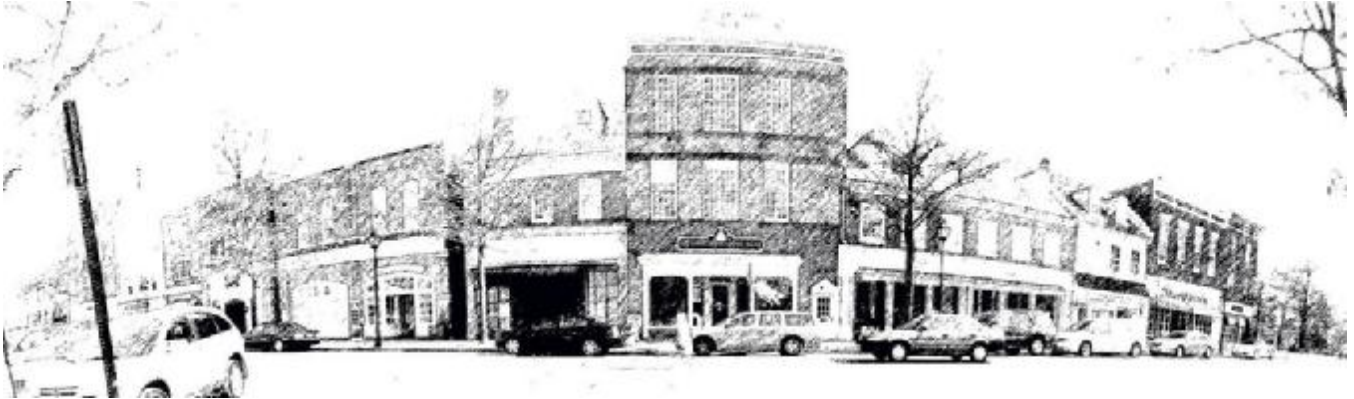


Choptank Tributary Team  
**November Meeting**



**November 13, 2008**  
**7:00 – 9:00 PM**

Talbot County Department of Public Works  
28712 Glebe Rd., Suite 3  
Easton, MD 21601

**Agenda**

- 7:00** Summary of Meeting with Delaware Choptank Team at Marydel
- 7:15** Presentations from Caroline & Talbot Health representatives followed by Questions & Answers
- 8:30** Nominate Watershed Hero to be awarded at Annual Meeting February 7th , MDE in Baltimore
- 8:45** New Business and Wrap-up (Be ready to for a holiday potluck sign up!)

**D**riving directions to 28712 Glebe Rd, Easton, MD 21601

1. Head <b>south</b> on <b>Ocean Gateway/US-50</b>	
2. Slight <b>right</b> toward <b>Easton Pkwy/MD-322</b>	
3. Slight <b>right</b> at <b>Easton Pkwy/MD-322</b> Continue to follow MD-322	
4. Turn <b>right</b> at <b>MD-33/St Michaels Rd</b>	1.8 mi
5. Turn <b>right</b> at <b>MD-370/Todds Corner Rd/Unionville Rd</b>	0.1 mi
6. Turn <b>right</b> at <b>Glebe Rd</b> Destination will be on the left	